

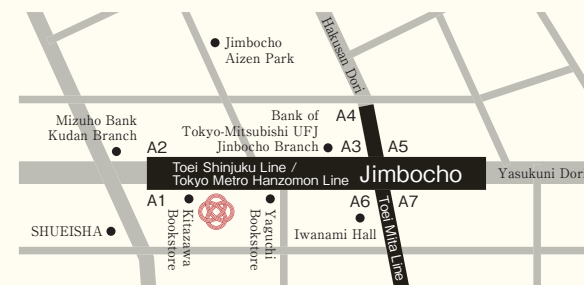
  
**SAKU REN**  
 JIMBOCHO

“Old book” “Music” “Cultured people”.  
 Jimbocho has the image of cultural town.  
 The fusion of Japanese interior and classical image.  
 Retro modern hotel “SAKU REN JIMBOCHO” was born there.  
 1900’s Jazz music and selected old book.  
 You can enjoy the cultural feeling of Jimbocho where old meets new.



  
**SAKU REN**  
 JIMBOCHO

## Access



### From the nearest station

- 1 min walking from Jimbocho station A1 Exit, Metro Hanzomon line, Mita line and Shinjuku line
- 11 mins walking from Suidobashi station, JR Sobu line
- 7 mins walking from Kudanshita station, Metro Tozai line, Hanzomon line and Shinjuku line
- 12 mins walking from Ochanomizu station Ochanomizubashi exit, JR Sobu line

### By car

- 10 mins from Iidabashi IC, Tokyo Metropolitan Expressway Ikebukuro line. From the exit, turn left at Iidabashi crossing, turn right at Suidobashi crossing, turn right at Jimbocho crossing and the hotel located at the left side.

\* No parking available at this hotel

### By train

- 7 mins from Tokyo station

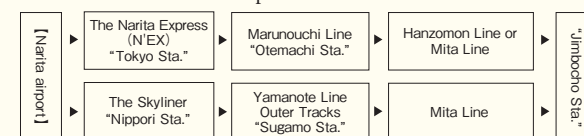


### From airports by train

- 50 mins from Haneda airport



- 70 mins from Narita airport



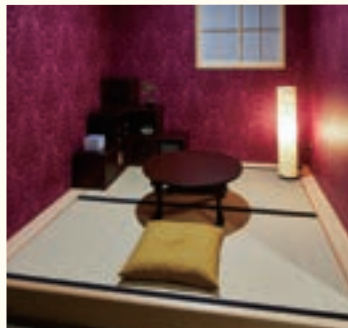
The hotel name “SAKU REN” means “to bloom” for SAKU and “a chance” for REN. We heartily want to make each encounter with our guest precious.


**SAKU REN**  
 JIMBOCHO

2-5-13 Kanda Jimbocho, Chiyoda-ku, Tokyo, 101-0051  
 TEL. 03-6261-0340 FAX. 03-6261-0350  
 WEB. <https://saku-ren.com>



# Rooms



## Premium ZEN Twin room

You can enjoy the atmosphere of Japanese Ryokan with small Japanese Tatami space.

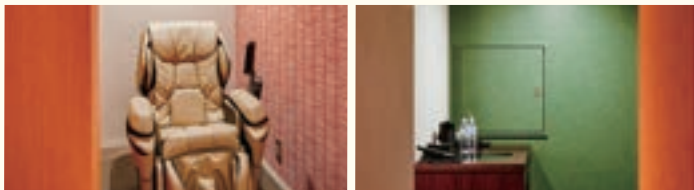
capacity : 1-2 people  
number of rooms : 1 room  
size of rooms : 37㎡



## Premium Twin room

You can feel relaxed with beds on raised tatami-floored. Maximum Occupancy is 4 people.

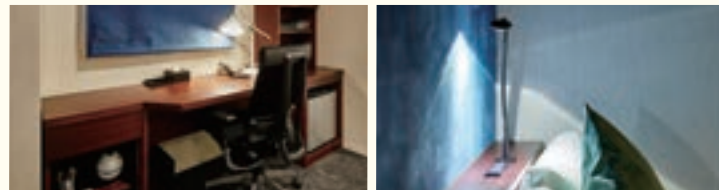
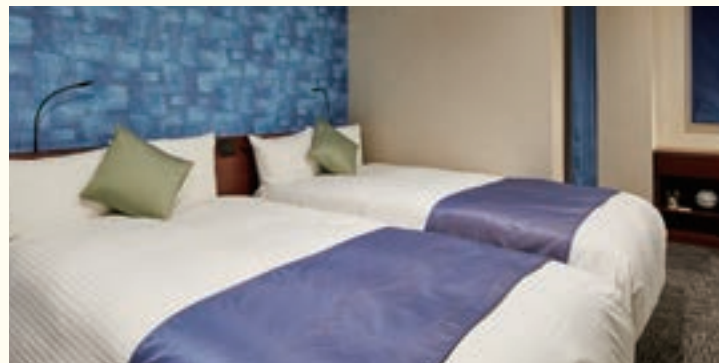
capacity : 1-4 people  
number of rooms : 1 room  
size of rooms : 37㎡



## Comfort Relax Twin room

The green-based room makes you refreshed and relaxed with a massage chair.

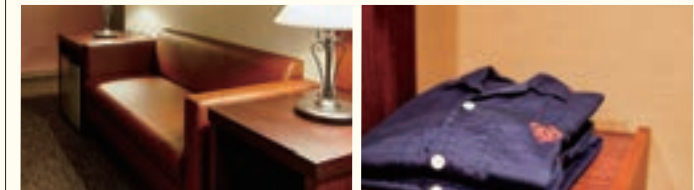
capacity : 1-2 people  
number of rooms : 10 rooms  
size of rooms : 23㎡



## Comfort Twin room

The blue-based room with a desk is suitable for business person and student.

capacity : 1-2 people  
number of rooms : 10 rooms  
size of rooms : 23㎡



## Comfort Double room

You can enjoy reading books at a sofa in a quiet and peaceful atmosphere.

capacity : 1-2 people  
number of rooms : 10 rooms  
size of rooms : 23㎡